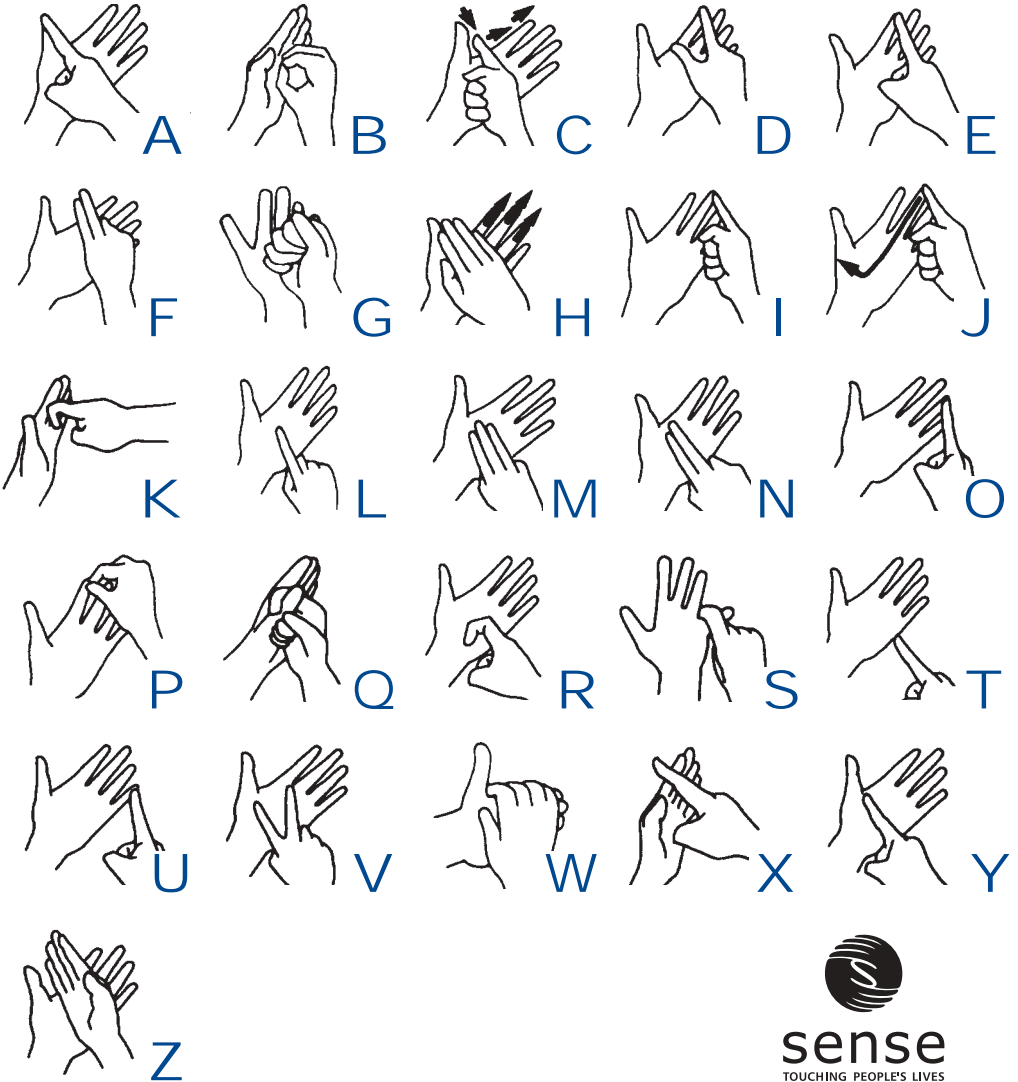


Deafblind Manual Alphabet



sense
TOUCHING PEOPLE'S LIVES

RNID • |||

for deaf and hard of hearing people

Communicating with deafblind people.

There are about 23,000 deafblind people in the UK. Some will be totally deaf and totally blind and others will have some hearing and vision.

Deafblind people communicate using a variety of methods, depending on their own needs.

- As many deafblind people still have a little sight and hearing they can use speech and hearing aids to communicate.
- Deafblind people who were born deaf or became deaf in early years usually communicate using British Sign Language. If they have lost their sight they will use hands-on signing.
- Some deafblind people use the Block Alphabet. This involves tracing out the alphabet in capital letters on the palms of their hands, or other part of the body.
- A quicker method is the Deafblind Manual Alphabet, where words are spelt out on the fingers and hands of a deafblind person.
- Very rarely, some deafblind people use Tadoma, where they place their hands on the speaker's lips or throat to feel vibrations.

19-23 Featherstone Street
London EC1Y 8SL

Telephone 0808 808 0123

Textphone 0808 808 9000

Fax 020 7296 8199

informationline@rnid.org.uk

www.rnid.org.uk

October 2002 Registered Charity No. 207720



INVESTOR IN PEOPLE



for deaf and hard of hearing people